

DISCRETE MANUFACTURING

INDUSTRY PERSPECTIVE

driving performance that can differentiate



Fierce competition has become a way of life for high-volume, discrete manufacturers. While other industries are just learning to cope, you are searching for advanced solutions that can give you the next leg up. Keeping quality high and costs low can set you apart – and help you retain customers. So information that can help you maximize equipment efficiency, meet regulatory demands for reduced waste, comply with limits on use of resources, and quickly correct production line incidents is essential.

That's why so many discrete manufacturers turn to Activplant. Our solutions are designed to help you achieve real-time operational visibility, optimize your assets and facilitate continuous improvement.

Depend on Activplant software to help you

- understand complex interactions on your lines
- identify true production constraints
- trim materials costs and reduce waste
- optimize personnel resources
- conduct track and trace
- analyze change-over data
- perform root cause analysis
- produce detailed reporting to satisfy regulatory requirements
- record RFID data
- receive real-time notifications for changes in production levels via paging or plant-wide visual displays

"Small improvements to automated high speed manufacturing systems creates huge value, Activplant provides us the accurate data and robust system to make these improvement on a regular basis – it has become part of our culture."

Systems Project Manager
High Volume Discrete Manufacturer

ActivEssentials: A Solid Platform for Discrete Manufacturing

You need the right information to get to the right people – in real time – to succeed in today's competitive marketplace. ActivEssentials from Activplant is built on Microsoft's proven technology, and includes five key components:

ActivEssentials Platform – A central system for single- or multi-server environments that includes data collection, Activplant's Universal Factory Data Model (UFDM) database, processing/communications, administrator interfaces for configuration and management, analytical views/tools, plus report management and storage.

Root Cause Assignment (RCA) – Incident response is greatly improved with this module that helps operators quickly analyze problems and take corrective actions. RCA includes a configurator for administrators, Root Cause View for day-to-day operational visibility, and a touch screen for reason code entry from the plant floor.

Real-Time Logic Engine (RTLE) – Designed to help you lower implementation and maintenance costs and achieve faster time to results, the OPC-compliant RTLE gathers data from multiple sources, aggregates it, and then processes it to provide meaningful, actionable information.

Insight for Excel – Harnesses the power and familiarity of Microsoft Excel to customize data, facilitate deeper analysis

and increase the value of reports. Insight provides standard spreadsheet views, historical reports, and tables with ad hoc data that refreshes automatically as new information becomes available.

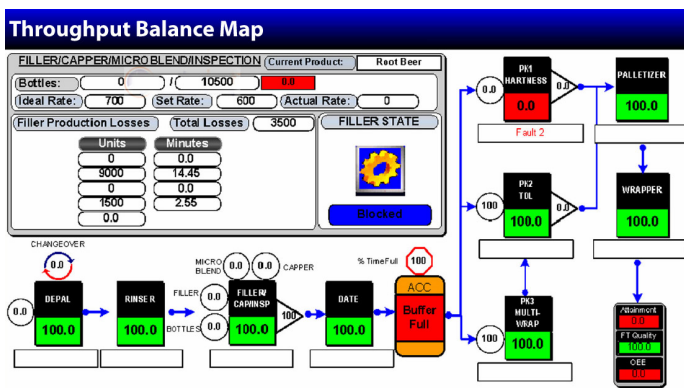
Integration Toolkit (ITK) – Links the ActivEssentials database to external systems and applications, such as MES, ERP, reporting packages, dashboards and more. Integration is simple, thanks to included data drivers and adapters for common systems and languages, and ITK includes a development tool for easy query and data set design.

Throughput Analyzer: Providing Essential Data for High-Volume Efficiency

Throughput Analyzer is a pre-packaged ActivApplication that provides Key Performance Drivers and can produce superior results by providing increased visibility at every level of your organization.

Based on best practices and built for quick-deployment, it allows you to focus in on the most useful, decision-enabling data. Constraints are identified in order of magnitude, so time and energy spent on corrections yields significant improvements. Standard and proprietary calculations produce performance metrics (Throughput Capability Metric and OEE) and attainment and operations measurements (cycle times, downtime, speed losses, and more).

Throughput Matters: Your operating costs are constant, whether your plant is running at top efficiency – or not. Therefore, every minute of lost production due to a true constraint creates a negative impact on profitability. And every minute of production gained is a true contribution to your bottom line.



The Throughput Analyzer Balance Map shows performance in real time, so you can see production constraints at a glance.

You Can Depend on Activplant

Activplant designs, develops and delivers innovative products that make the promise of business intelligence a reality. Our mission is to provide the software solutions that high-volume, discrete manufacturers need to collect data, analyze it, and enable a more efficient enterprise.

ABOUT ACTIVPLANT

Activplant Corporation, the leading provider of Business Intelligence for manufacturing operations, is focused on providing innovative software solutions to high-volume, high-automation manufacturers. Since the company's founding in 1998, Activplant's award-winning Business Intelligence platform and applications have helped many world-class manufacturers gain insight into their operations through the consolidation of plant floor data into relevant real-time and historical intelligence. Using this intelligence, Activplant customers better understand and manage their operational performance by focusing on the key issues in their facilities which ultimately affect cost, quality, and supply chain demand requirements.



The Talbot Centre
140 Fullarton Street, 9th Floor
London, ON N6A 5P2

Toll Free: 1.877.809.6444
Telephone: 519.668.7336
Fax: 519.668.3227

www.activplant.com